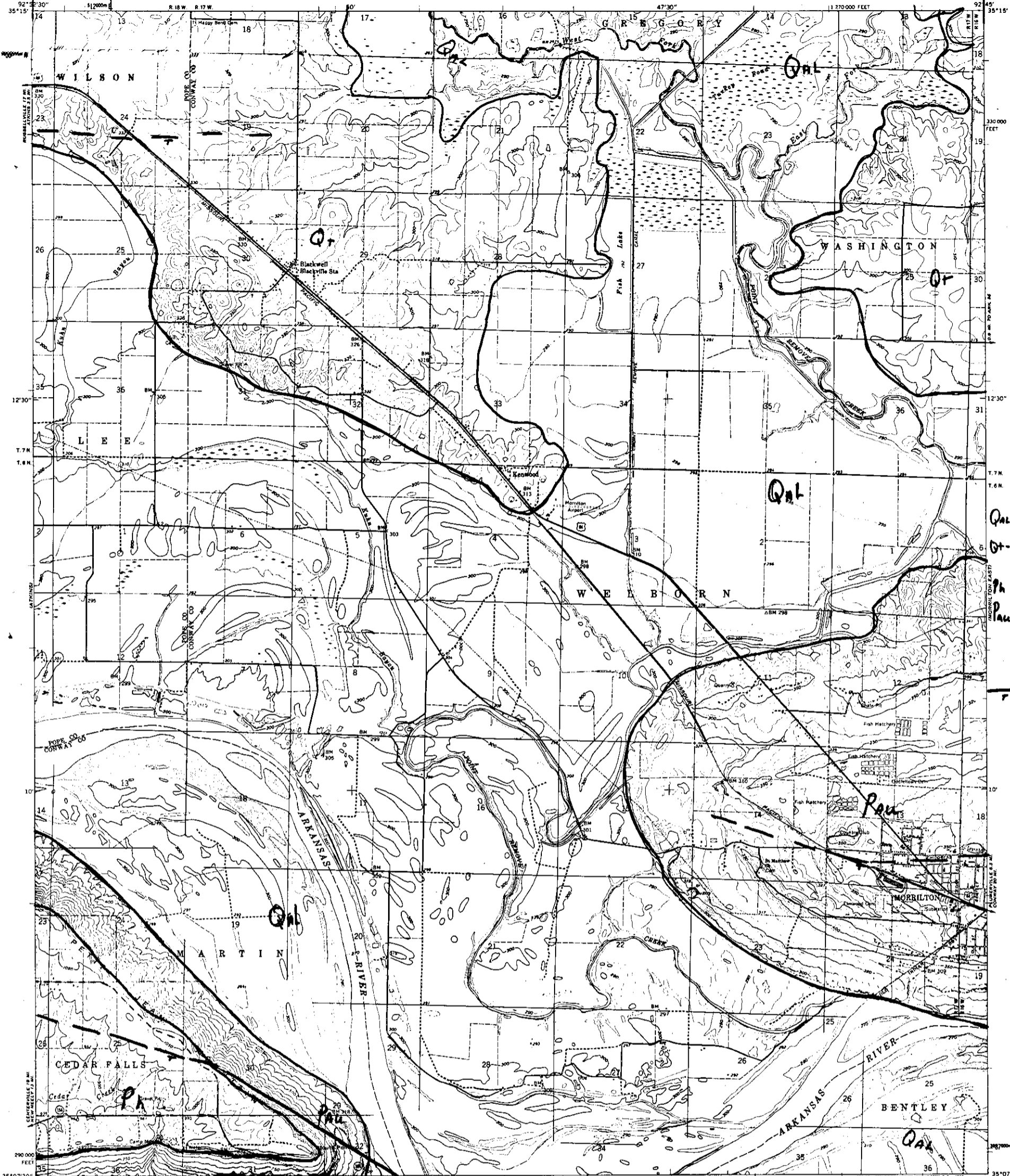


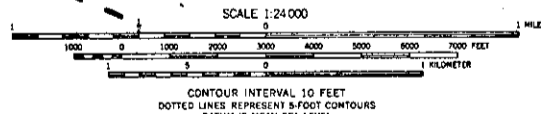
Reduce this line to *for New State map*

Mr. *Halley*



*Qal* - Alluvium  
*Qt* - terrace  
*Ph* - Hartshorn  
*Palu* - upper  
*pl* - lower  
*r* - fault

Mapped, edited, and published by the Geological Survey  
Control by USGS, USC&GS, and USCE  
Topography by photogrammetric methods from aerial  
photographs taken 1958. Field checked 1961  
Polyconic projection. 1927 North American datum  
10,000-foot grid based on Arkansas coordinate system, north zone  
1000-meter Universal Transverse Mercator grid ticks,  
zone 15, shown in blue  
Red tint indicates areas in which only landmark buildings are shown  
Fine red dashed lines indicate selected fence and field lines where  
generally visible on aerial photographs. This information is unchecked



*Stone* ROAD CLASSIFICATION  
Heavy-duty Light-duty  
Medium-duty Unimproved dirt  
U.S. Route State Route



THIS MAP COMPLIES WITH NATIONAL MAP ACCURACY STANDARDS  
FOR SALE BY U. S. GEOLOGICAL SURVEY, DENVER 25, COLORADO OR WASHINGTON 25, D. C.  
AND BY THE ARKANSAS GEOLOGICAL AND CONSERVATION COMMISSION, LITTLE ROCK, ARKANSAS  
A FOLDER DESCRIBING TOPOGRAPHIC MAPS AND SYMBOLS IS AVAILABLE ON REQUEST

C. G. Stone MORRILTON WEST, ARK.  
Sept. 1969 N 3507.5 - W 9245.7.5  
1961

MASTER COPY